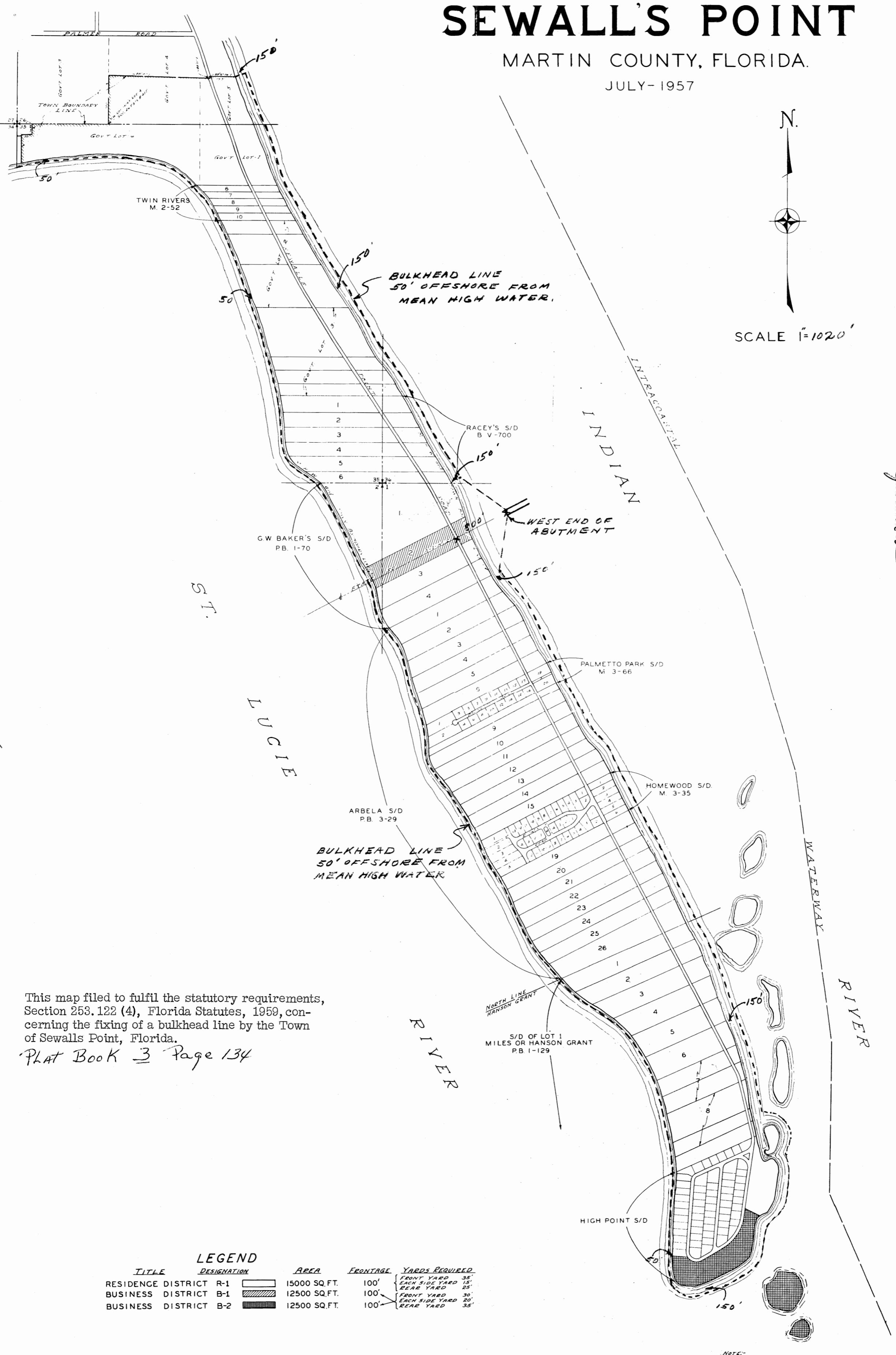


76331

ZONING MAP FOR THE TOWN OF SEWALL'S POINT

MARTIN COUNTY, FLORIDA.
JULY-1957



This map filed to fulfil the statutory requirements, Section 253.122 (4), Florida Statutes, 1959, concerning the fixing of a bulkhead line by the Town of Sewalls Point, Florida.
PLAT BOOK 3 Page 134

LEGEND

TITLE	DESIGNATION	AREA	FRONTAGE	YARDS REQUIRED
RESIDENCE DISTRICT	R-1	15000 SQ. FT.	100'	FRONT YARD 35' EACH SIDE YARD 15' REAR YARD 25'
BUSINESS DISTRICT	B-1	12500 SQ. FT.	100'	FRONT YARD 30' EACH SIDE YARD 20' REAR YARD 35'
BUSINESS DISTRICT	B-2	12500 SQ. FT.	100'	FRONT YARD 30' EACH SIDE YARD 20' REAR YARD 35'

NOTE: ISLANDS NOT INCLUDED IN TOWN BOUNDARY

STAFFORD & BROCK
CIVIL ENGINEERS
LAND SURVEYORS
STUART - FLORIDA

FILED & RECORDED
IN MARTIN COUNTY, FLA.
JUN 20 PM 2:51
D. L. LUCE